

27.00  
①

Prepared by and return to:  
William M. Seider, Esq.  
Williams, Parker, Harrison, Dietz & Getzen  
200 South Orange Avenue  
Sarasota, FL 34236  
(941) 366-4800



2007011381

~~THIRD~~  
FOURTH

~~THIRD~~

AMENDMENT

TO DECLARATION OF CONDOMINIUM OF  
BUCKINGHAM MEADOWS II OF ST. ANDREWS EAST AT THE PLANTATION

RECORDED IN OFFICIAL RECORDS  
INSTRUMENT # 2007011381 3 PGS  
2007 JAN 22 06:05 PM  
KAREN E. RUSHING  
CLERK OF THE CIRCUIT COURT  
SARASOTA COUNTY, FLORIDA  
CEAGLETO Receipt#875563

PURSUANT to Section 718.403, Florida Statutes, and the provisions of the Declaration of Condominium of Buckingham Meadows II of St. Andrews East at the Plantation as recorded in the Official Records as Instrument #2006146739, Public Records of Sarasota County, Florida, SAP DEVELOPMENT I, INC., a Florida corporation, hereby amends said Declaration of Condominium for the purpose of submitting Phase 3 to condominium ownership as a part of Buckingham Meadows II of St. Andrews East at the Plantation, a Condominium. Phase 3 is more particularly described in the Condominium Plat of Buckingham Meadows II of St. Andrews East at the Plantation attached as Exhibit "A" to said Declaration of Condominium and recorded in Condominium Book 39, Page 42, Public Records of Sarasota County, Florida. The condominium Plat also contains an identification of each unit in Phase 3, a graphic description of the improvements in which such units are located and a plot plan thereof, a survey of Phase 3, and a certificate of surveyor in conformance with Section 718.104(4)(e), Florida Statutes. By this Amendment, the common elements of Phase 3 are merged with the common elements of existing phases and hereby becomes part of one condominium known as Buckingham Meadows II of St. Andrews East at the Plantation. Commencing with the recording of this Amendment in the Public Records, each condominium unit will have a 1/ 24 th share in the common elements, common expenses, and common surplus of the condominium, so that each condominium unit will share equally with all other condominium units in Buckingham Meadows II of St. Andrews East at the Plantation. Developer further amends said survey and plot plan in accordance with the Certificate of Surveyor attached hereto and by this reference made a part hereof.

IN WITNESS WHEREOF, Developer has caused this Amendment to be executed in its name this 19th day of January, 2007.

Witnesses:

Debbie L. Connelly  
Signature of Witness

Debbie L. Connelly  
Print Name of Witness

[Signature]  
Signature of Witness

James A. Connelly  
Print Name of Witness

SAP DEVELOPMENT I, INC., a Florida corporation

By: [Signature]  
Print Name: Stephen E. Latmann  
Title: President

RECORDED IN OFFICIAL RECORDS  
INSTRUMENT # 2007017329 3 PGS  
2007 JAN 31 04:56 PM  
KAREN E. RUSHING  
CLERK OF THE CIRCUIT COURT  
SARASOTA COUNTY, FLORIDA  
CEAGLETO Receipt#879585

STATE OF FLORIDA  
COUNTY OF SARASOTA

The foregoing instrument was acknowledged before me, this 19th day of January, 2007, by Stephen E. Latmann, as President of SAP DEVELOPMENT I, INC., a Florida corporation, on behalf of the corporation. The above-named person is personally known to me.



Debbie L. Connelly  
Notary Public

Print or type name of Notary Public  
I am a Notary Public of the State of Florida and my commission expires on \_\_\_\_\_

713207\_1.doc



2007017329

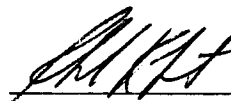
\*\*\* RE-RECORD TO CORRECT SCRIVENER'S ERROR \*\*\*

## CERTIFICATE OF SURVEYOR

I, the undersigned Registered Land Surveyor, hereby certify the following:

1. This certificate is made with respect to Unit 1566 of Phase 3, Buckingham Meadows II of St. Andrews East at the Plantation, a condominium shown on the Condominium plat recorded in Condominium Book 39, Pages 42 – 42D, Public Records of Sarasota County, Florida.
2. The Construction of the improvements for said Units are substantially complete.
3. The plat, together with the provisions of the Declaration describing the Condominium Property, is an accurate representation of the location and dimensions of said Unit.
4. The identification, location and dimensions of the common elements and of each such Unit can be determined from the plat and the provisions of said Declaration.
5. All planned improvements, including, but not limited to, landscaping, utility services and access to said Units, and common element facilities, serving the building in which said Unit is located have been substantially completed.

JRI ENGINEERING, INC.  
LICENSED SURVEYOR BUSINESS NO. 6673

  
Date: 1/17/2007  
Ronald Kerfoot  
Florida Surveyor Certificate No. 2994

JRI ENGINEERING, INC.  
2328 Hancock Bridge Parkway, Suite 114  
Cape Coral, Florida 33990  
Phone: 239-458-5544

SHEET 1 OF 2

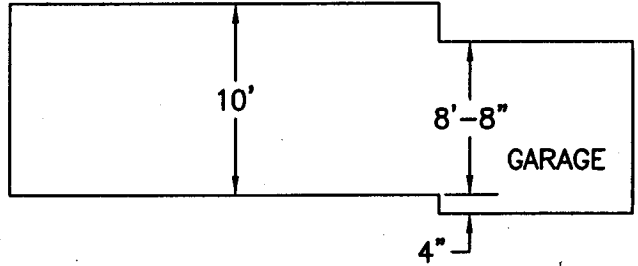
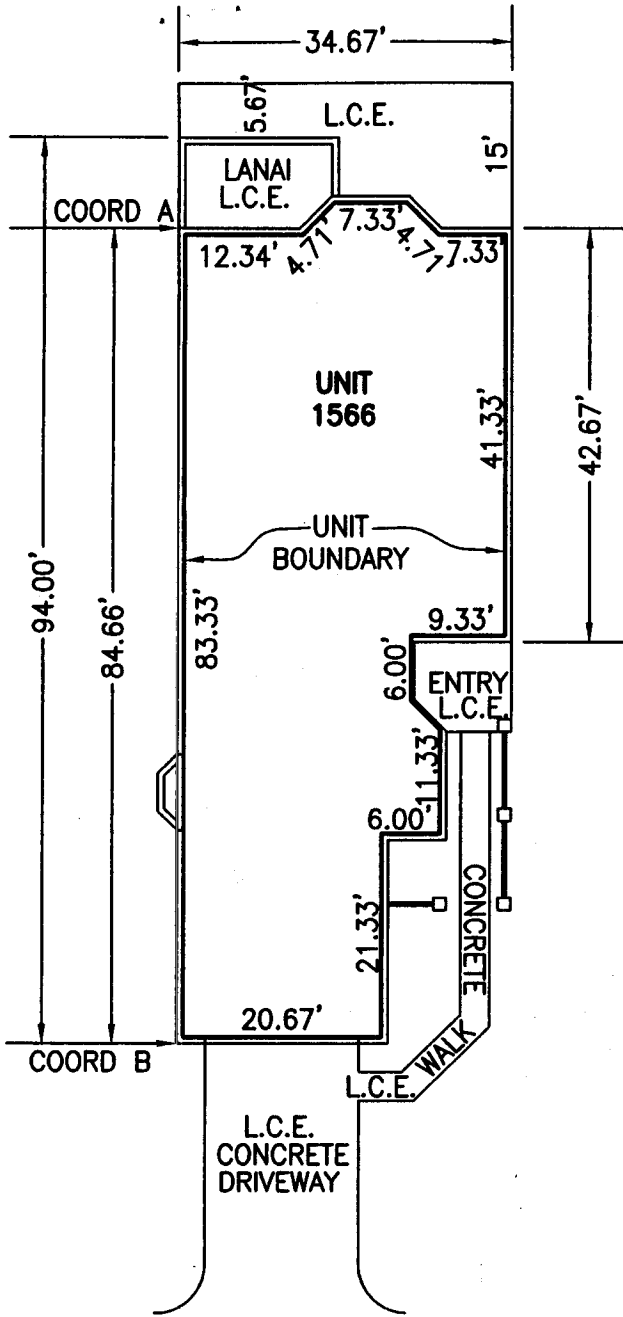
COORD A

COORD B

UNIT 1566

N=18911.26  
E=14234.14

N=18934.28  
E=14315.54



CROSS SECTION FOR EATON II NOT TO SCALE

EATON II  
SCALE 1"=20'

NOTE: ALL UNIT DIMENSIONS SHOWN REFER TO INSIDE DIMENSIONS OF THE UNIT AND ARE SUBJECT TO SLIGHT VARIANCE WHICH MAY OCCUR DURING CONSTRUCTION

UNITS 1566, PHASE 3,  
 "RECORD" FLOOR PLAN  
 BUCKINGHAM MEADOWS II OF ST. ANDREWS EAST AT THE PLANTATION  
 A CONDOMINIUM  
 SARASOTA COUNTY, FLORIDA

**LEGEND**

L.C.E. LIMITED COMMON ELEMENT

**JRI Engineering, Inc.**

Planning Engineering Surveying Aerial Photography & Photogrammetry Services

2328 Hancock Bridge Parkway, Suite 114, Cape Coral, Florida 33990  
 Phone: 239.458.5544 Fax: 239.458.2233 www.jriengineeringinc.com  
 Surveying Business Certificate of Authorization No. 6873

JRI ENGINEERING, INC.  
 LICENSED SURVEYOR BUSINESS NO. 6673

*Ronald Kerfoot* 1/17/2007

RONALD KERFOOT  
 FLORIDA REGISTERED LAND SURVEYOR NO. 2994